

# Analysis of Elemental Contaminants in Beverages using the Thermo Scientific iCAP 7200 ICP-OES

Patrícia Coelho, Applications Chemist, Thermo Fisher Scientific, Cambridge, UK

## Key Words

Beverages, Contaminants, EN 1134:1994

## Goal

This application note describes the high performance of the Thermo Scientific iCAP 7200 ICP-OES when analysing elemental contaminants in different types of beverages. The duo view offers optimal method conditions using axial plasma view for traces and radial plasma view for major elements, and the pre-loaded template allows for rapid and simple method development.

## Introduction

In recent years, several investigations around the world have captured global media attention by highlighting excessive contamination of foodstuffs and beverages. This has prompted local authorities in many countries to increase the legislation and level of testing required for foodstuffs and beverages. Most method directives involving the analysis of beverages, including those in Europe, are based upon acid digestion and analysis by atomic absorption spectroscopy (AAS), these have yet to be updated to include Inductively Coupled Plasma – Optical Emission Spectroscopy (ICP-OES).

The analysis of contaminants in beverages in Europe is based on the recommendation of the European Union “Reports on tasks for Scientific Cooperation” (SCOOP, Task 3.2.11) and the Committee on Toxicity (COT; Chemicals in Food, Consumer Products and the Environment, 2004) which researched and established the average human intake and absorption of contaminants and nutrients from liquids. The elements ordinarily analyzed, both contaminants and major constituent elements are displayed in Table 1.

Table 1. Elements commonly analyzed in beverages

Major nutrients	Contaminants		
<b>Ca</b>	Al	Fe	Zn
<b>Mg</b>	As	Mn	
<b>K</b>	Cd	Pb	
<b>Na</b>	Cu	Sn	



The method most commonly used for fruit juices is EN 1134:1994 “Method for determination of sodium, potassium, calcium and magnesium contents of fruit and vegetable juices by atomic absorption spectrometry”, which, was developed for atomic absorption spectrometry analysis and includes microwave digestion of samples. ICP-OES has the advantage of processing these samples directly, so the EN 1134 method has been adapted to allow for removal of the digestion step, thus saving time and materials and reducing method development.

## Instrumentation

The Thermo Scientific iCAP 7200 ICP-OES was used for the direct analysis of a range of beverages. This instrument achieves powerful analyte detection and provides a highly cost effective solution for routine analysis of liquids in laboratories with standard sample throughput requirements. The Thermo Scientific Qtegra™ Intelligent Scientific Data Solution (ISDS) simplifies method development and provides an option of immediate analysis.

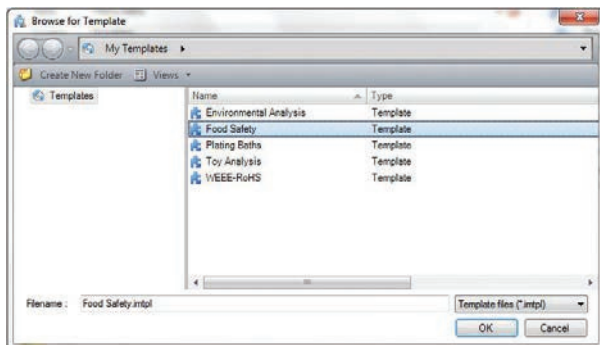


Figure 1. Food Safety template selection

## Sample and standard preparation

Three different beverages below were analyzed:

- Blackcurrant squash concentrate – normally consumed diluted with water (in a 1:4 proportion)
- Beer – a British ale was used, one drop of a silicone anti-foaming agent was added to reduce the influence of the dissolved CO<sub>2</sub> gas on nebulization and transport
- Pure cranberry juice (smooth) – consumed undiluted

Samples were prepared by shaking the individual containers and weighting 20 g of each into a glass volumetric flask. An additional 2 g aliquot mass was also weighed into a volumetric flask to determine higher concentration elements. A duplicate was prepared for each beverage, which was spiked with a small concentration of aqueous standard for recovery testing. All samples were diluted to 100 mL volume with deionized water.

Calibration standards were prepared by diluting traceable 1000 mg/L single element solutions (Fisher chemicals, Loughborough, UK) the final concentrations are listed in Table 2. All solutions were made to volume in deionized water, although 0.5% high purity nitric acid may be used to improve the long-term stability of the solutions, as required.

Table 2. Calibration standard concentrations (mg/L)

Element	Blank	Standard 1	Standard 2	Standard 3
Al	0	0.5	1	2
As	0	0.5	1	2
Ca	0	2	5	10
Cd	0	0.5	1	2
Cu	0	0.5	1	2
Fe	0	0.5	1	2
K	0	2	5	10
Mg	0	2	5	10
Mn	0	0.5	1	2
Na	0	2	5	10
Pb	0	0.5	1	2
Sn	0	0.5	1	2
Zn	0	0.5	1	2

## Method Development

The Food Safety template was opened in Qtegra ISDS, which contains all of the required method parameters and standard concentrations' as listed in this note. The standard sample introduction kit was used for the analysis as per the recommendations in the method notes. The instrument was calibrated and the samples analyzed in a single run. Table 3 shows the method parameters used for the method.

Table 3. Method parameters

Parameter	Setting
<b>Pump tubing</b>	Sample Tygon® orange/white Drain Tygon® white/white
<b>Pump speed</b>	45 rpm
<b>Nebulizer</b>	Glass concentric
<b>Nebulizer gas flow</b>	0.15 MPa
<b>Spray chamber</b>	Glass cyclonic
<b>Center tube</b>	2 mm
<b>RF Power</b>	1150 W
<b>Coolant gas flow</b>	12 L/min
<b>Auxiliary gas flow</b>	1.0 L/min
<b>Exposure times</b>	Axial 15 seconds Radial 10 seconds

## Results

The results obtained in the analysis of the different beverage samples are shown in Table 4 and are further highlighted in Figure 2. Each sample was spiked with the same 1000 mg/L solutions used to make the calibration standards. These spiked samples were analyzed in the same run as the samples and all recoveries were within the acceptable range of  $\pm 20\%$ . Method detection limits (MDLs) were established for the trace elements by analyzing the cranberry juice, with ten replicates. This approach was chosen as the majority of the trace elements were very close to the expected detection limit concentrations or slightly higher. The standard deviation of the result was multiplied by 3 to give a detection limit in mg/L that equates to a confidence interval of approximately 98.5%.

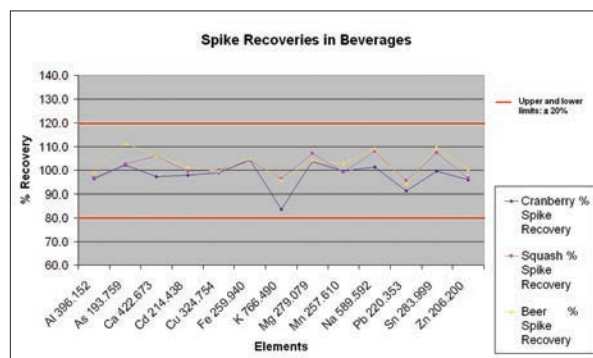


Figure 2. Percentage recovery of spikes in analyzed beverages

Table 4. Results of the analysis of the beverages

Element and Wavelength nm	Spike value (mg/L)	Cranberry undiluted (mg/L)	Cranberry spike recovery (%)	Cranberry 20 g/100 mL detection limit ( $\mu\text{g/L}$ )	Squash undiluted (mg/L)	Squash spike recovery (%)	Beer undiluted (mg/L)	Beer spike recovery (%)
<b>Al 396.152</b>	0.5	0.0393	96.3	0.93	0.1305	96.8	0.1318	99.1
<b>As 193.759</b>	0.5	<DL	102.1	4.11	<DL	102.5	<DL	111.4
<b>Ca 422.673</b>	2	53.1	97.2	–	40.1	106.1	36.7	106.2
<b>Cd 214.438</b>	0.5	<DL	97.9	0.07	<DL	99.5	<DL	101.4
<b>Cu 234.754</b>	0.5	0.0425	98.8	0.85	0.0093	100.1	0.0100	99.6
<b>Fe 259.940</b>	0.5	0.44	104.4	6.08	0.2345	104.4	0.1338	104.9
<b>K 766.490</b>	2	190	83.8	–	484	96.5	532	96.0
<b>Mg 279.079</b>	2	21.1	103.7	–	7.72	107.1	89.4	104.0
<b>Mn 257.610</b>	0.5	0.3645	99.5	1.65	0.106	99.0	0.092	102.9
<b>Na 589.592</b>	2	40.9	101.3	–	156	107.9	28.2	109.2
<b>Pb 220.353</b>	0.5	<DL	91.1	1.28	<DL	95.5	<DL	94.4
<b>Sn 283.999</b>	0.5	<DL	99.7	5.11	<DL	107.3	0.0028	109.8
<b>Zn 206.200</b>	0.5	0.085	96.0	0.47	0.0340	96.7	<DL	100.2

All of the trace contaminants detrimental to human health (As, Cd and Pb) were measured and found to be below the regulation limits (see Table 5 below).

The results show that the robust RF generator and the optimized sample handling kit easily handled the range of sample densities and viscosities. An internal standard may be added if the recoveries degrade below regulation levels. An online, internal standard mixing kit may also be used for ease of use or to reduce labour for higher sample numbers -by connecting an additional pump tube and adding the internal standard on-line continuous accurate dilution of the sample is assured. Qtegra ISDS allows the analyst the ability to turn the internal standard on or off pre or post analysis, saving valuable method development time as only one analysis is required to generate two sets of results.

Table 5. Regulation maximum allowed concentrations in various beverages

Element	Maximum (mg/L)
<b>As</b>	<0.2
<b>Cd</b>	<0.1
<b>Cu</b>	<2
<b>Fe</b>	<7
<b>Pb</b>	<0.5
<b>Sn</b>	<100

## Conclusion

The Thermo Scientific iCAP 7200 ICP-OES and pre-loaded Qtegra ISDS template makes the analysis of beverages rapid and analyst friendly allowing both experienced and inexperienced users alike to vastly reduce the method development time for these types of samples, resulting in cost effective analyses. In addition to the time saving on method development, removal of the digestion stage and the use of internal standards produces an easy to use, versatile method capable of analyzing a wide variety of food and beverage samples.

## www.thermoscientific.com

©2013 Thermo Fisher Scientific Inc. All rights reserved. ISO is a trademark of the International Standards Organization. Tygon is a registered trademark of Saint-Gobain. All other trademarks are the property of Thermo Fisher Scientific Inc. and its subsidiaries. This information is presented as an example of the capabilities of Thermo Fisher Scientific Inc. products. It is not intended to encourage use of these products in any manners that might infringe the intellectual property rights of others. Specifications, terms and pricing are subject to change. Not all products are available in all countries. Please consult your local sales representative for details.



Thermo Electron Manufacturing Ltd  
(Cambridge) is ISO Certified.

<b>Africa-Other</b> +27 11 570 1840	<b>Europe-Other</b> +43 1 333 50 34 0	<b>Japan</b> +81 45 453 9100	<b>Spain</b> +34 914 845 965
<b>Australia</b> +61 3 9757 4300	<b>Finland/Norway/Sweden</b> +46 8 556 468 00	<b>Latin America</b> +1 561 688 8700	<b>Switzerland</b> +41 61 716 77 00
<b>Austria</b> +43 1 333 50 34 0	<b>France</b> +33 1 60 92 48 00	<b>Middle East</b> +43 1 333 50 34 0	<b>UK</b> +44 1442 233555
<b>Belgium</b> +32 53 73 42 41	<b>Germany</b> +49 6103 408 1014	<b>Netherlands</b> +31 76 579 55 55	<b>USA</b> +1 800 532 4752
<b>Canada</b> +1 800 530 8447	<b>India</b> +91 22 6742 9434	<b>New Zealand</b> +64 9 980 6700	
<b>China</b> +86 10 8419 3588	<b>Italy</b> +39 02 950 591	<b>Russia/CIS</b> +43 1 333 50 34 0	
<b>Denmark</b> +45 70 23 62 60		<b>South Africa</b> +27 11 570 1840	

AN43151\_E 01/13C

**Thermo**  
SCIENTIFIC  
Part of Thermo Fisher Scientific